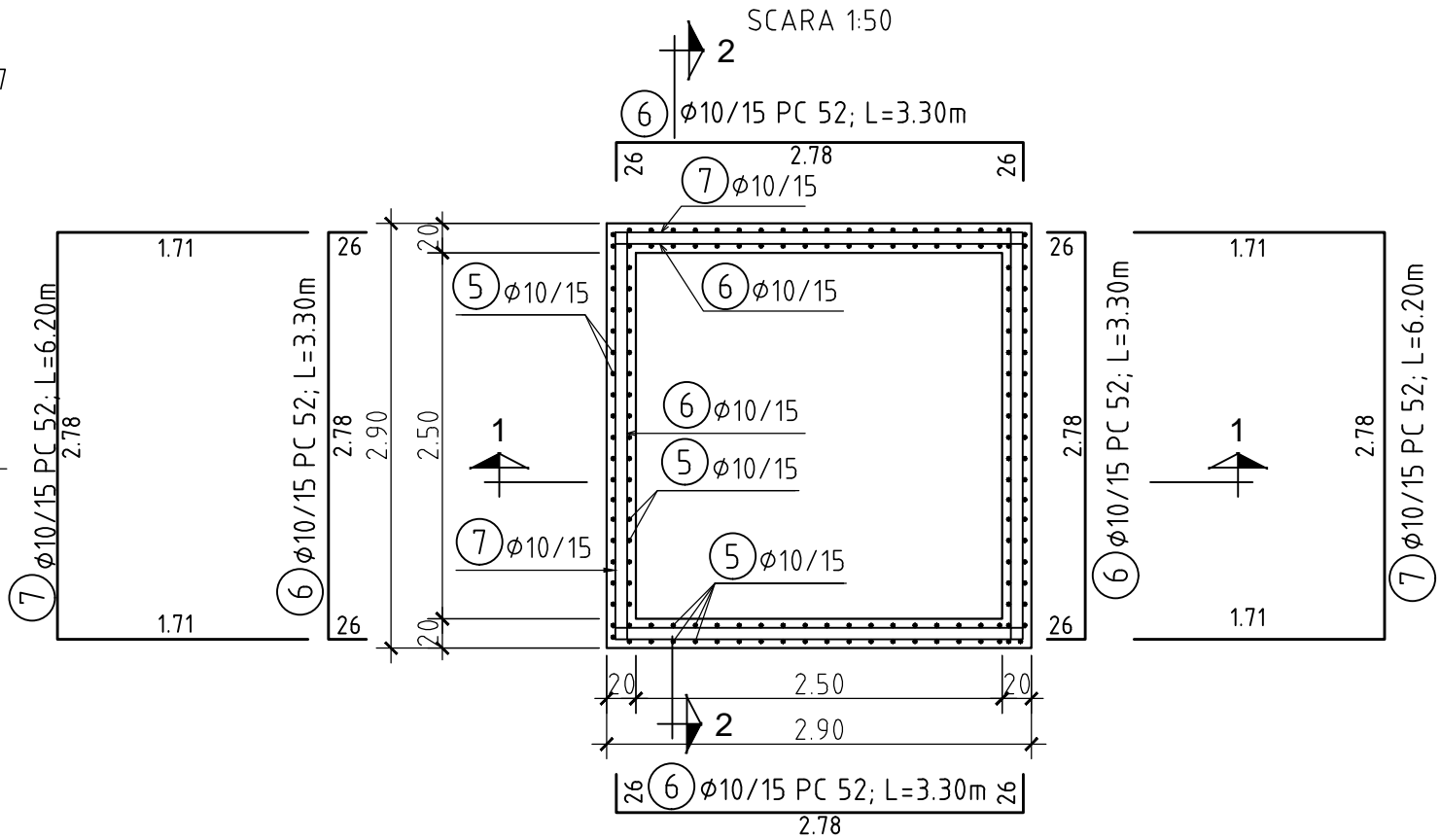
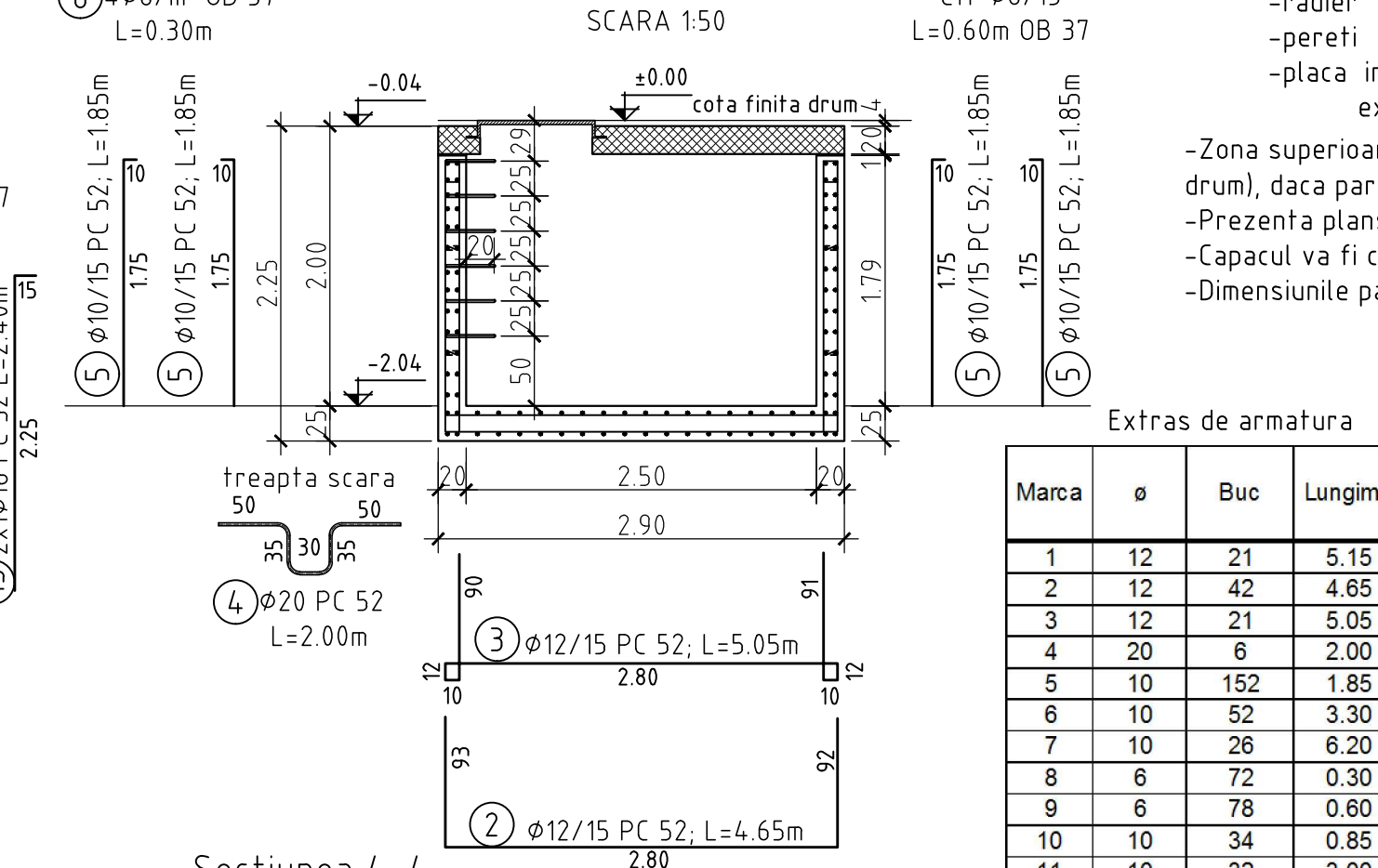


PLAN ARMARE CAMIN TIP 17

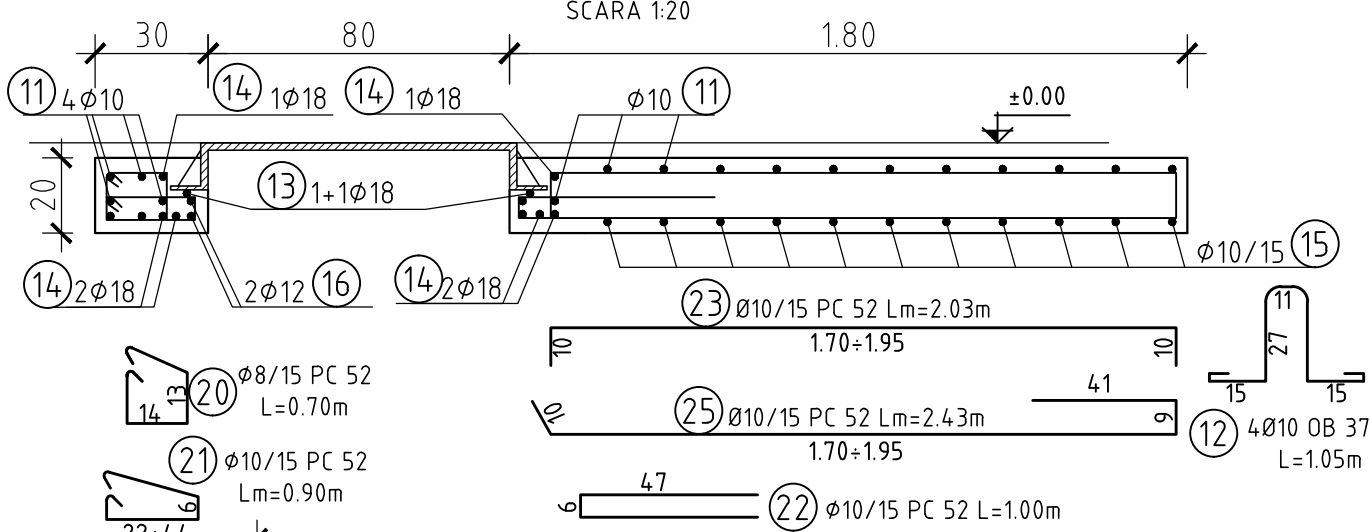
SCARA 1:50



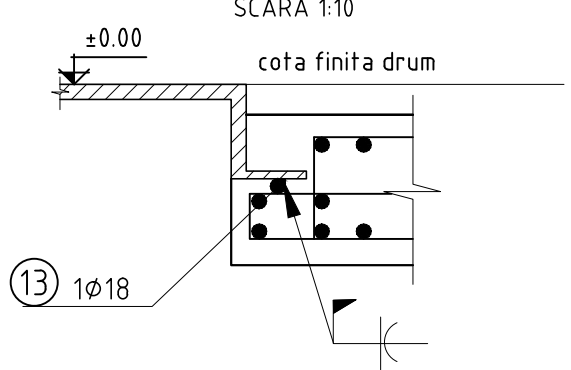
SCARA 1:50



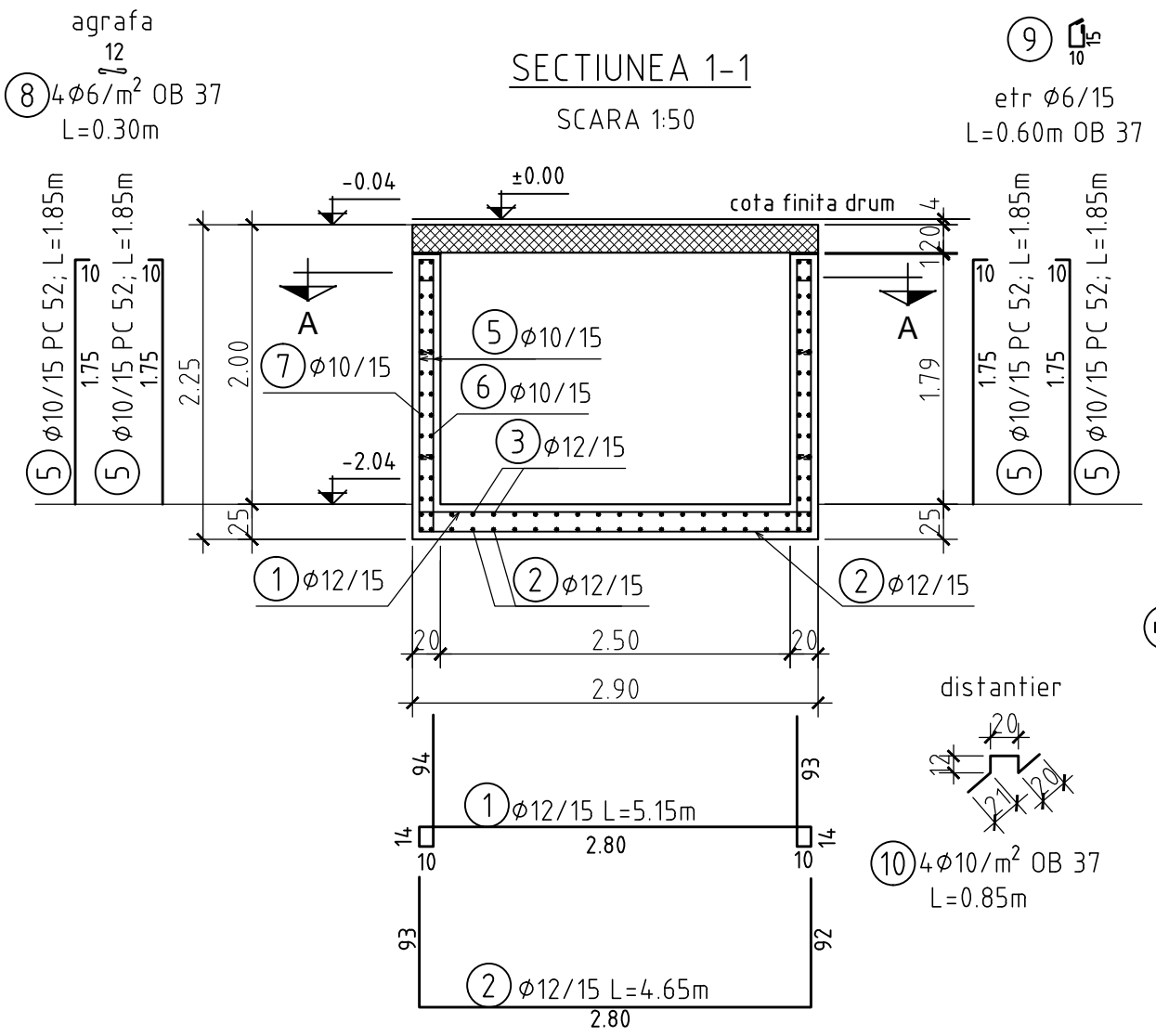
SCARA 1:20



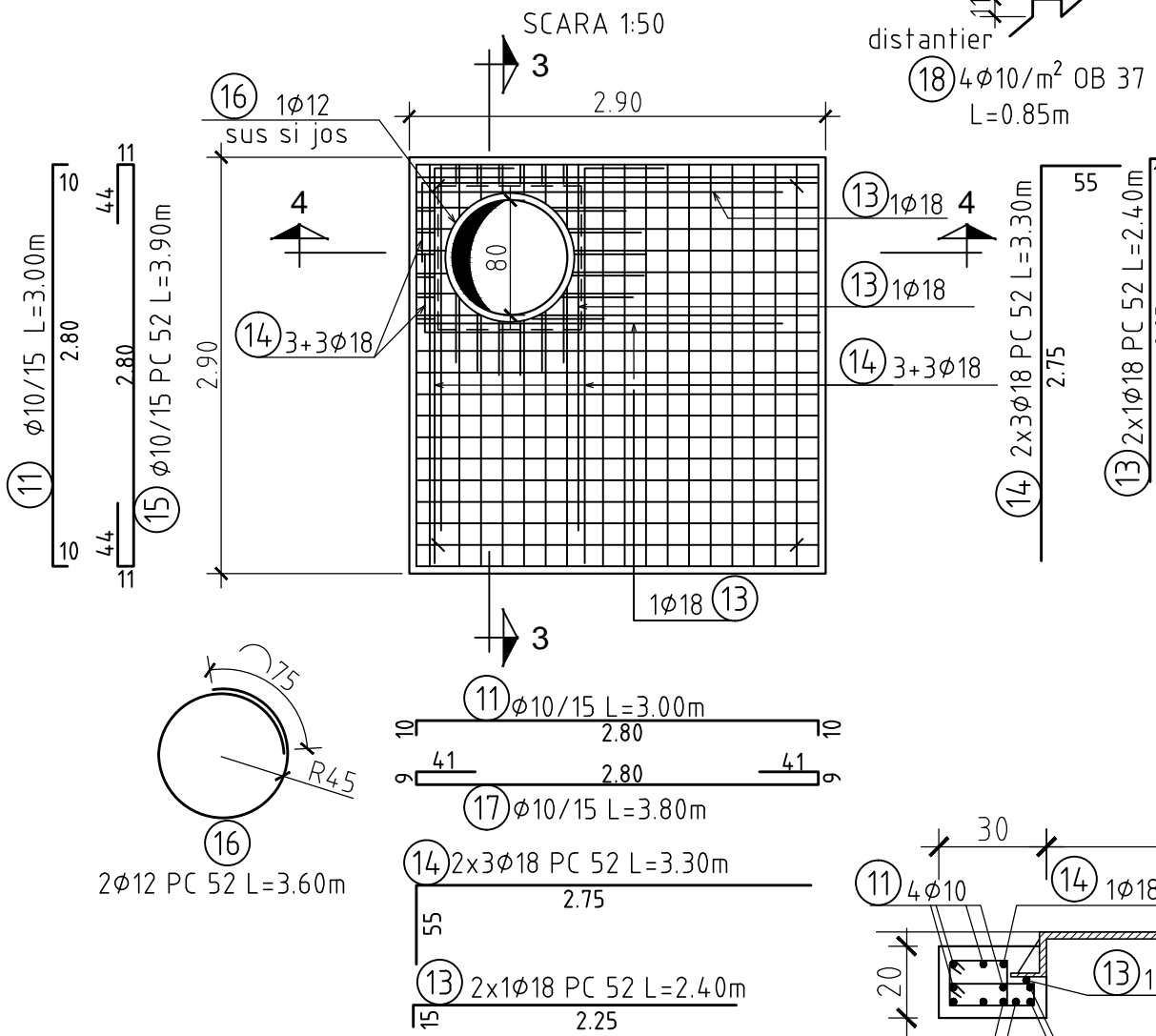
SCARA 1:10



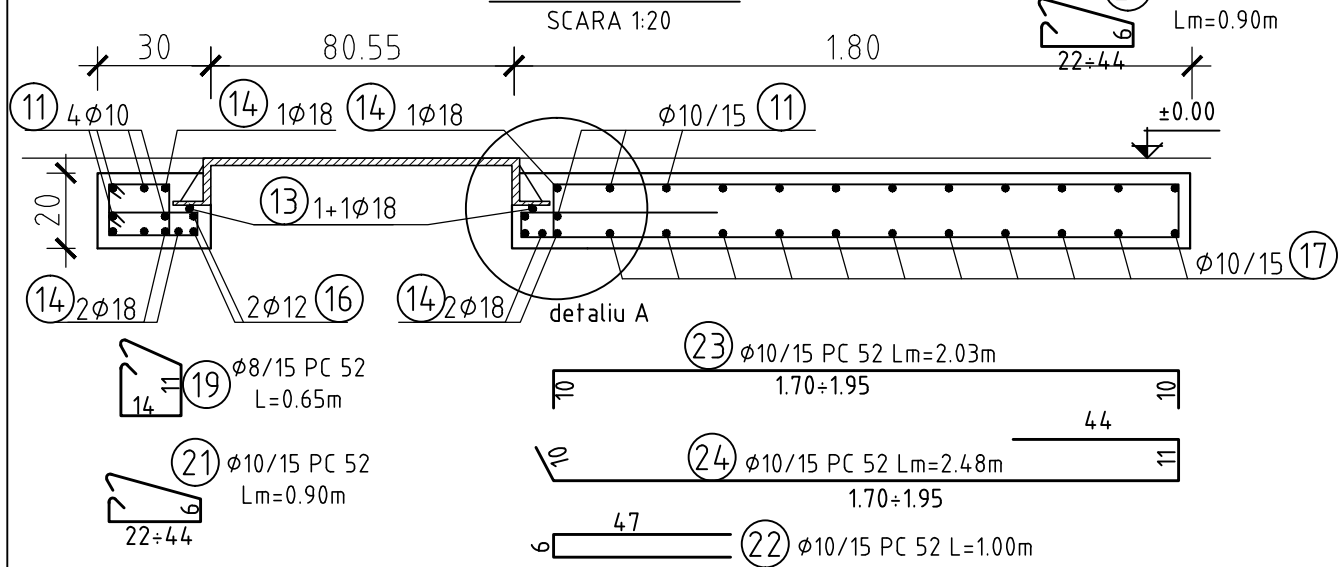
SCARA 1:50



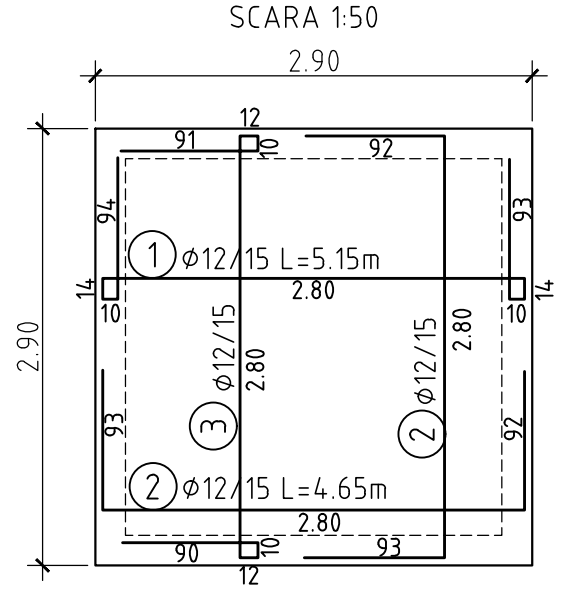
SCARA 1:50



SCARA 1:20



SCARA 1:50



tu beton a
45

- Acoperirea nominala cu beton a armaturilor este:
 - radier 45mm
 - pereti 40mm
 - placa interior 20mm
 - exterior 30mm

- Zona superioara a caminului se va betona pana la cota 0.00(cota finita drum), daca partea carosabila nu este din asfalt.
- Prezentia planşa se va citi impreuna cu plansele de instalatii hidraulice.
- Capacul va fi carosabil cu rama patrata, clasa D 400.
- Dimensiunile partiiale ale armaturilor sunt cotate la interior.

--	--	--	--

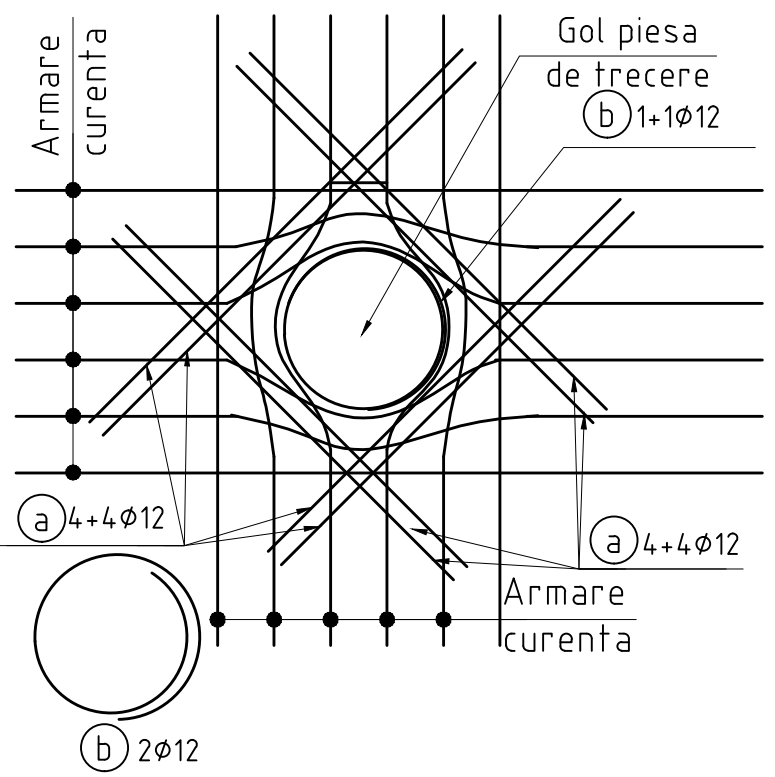
Marca	ø	Buc	Lungime	OB 37		PC52					
				ø 6	ø 10	ø 8	ø 10	ø 12	ø 18	ø 20	
1	12	21	5.15					108.15			
2	12	42	4.65					195.30			
3	12	21	5.05					106.05			
4	20	6	2.00							12.00	
5	10	152	1.85				281.20				
6	10	52	3.30				171.60				
7	10	26	6.20				161.20				
8	6	72	0.30	21.60							
9	6	78	0.60	46.80							
10	10	34	0.85		28.90						
11	10	32	3.00				96.00				
12	10	4	1.05		4.20						
13	18	4	2.40						9.60		
14	18	12	3.30						39.60		
15	10	13	3.90				50.70				
16	12	2	3.60					7.20			
17	10	13	3.80				49.40				
18	10	34	0.85		28.90						
19	8	7	0.65			4.55					
20	8	7	0.70			4.90					
21	10	12	Lm=0.90			10.80	10.80				
22	10	12	1.00				12.00				
23	10	12	Lm=2,03				24.36				
24	10	6	Lm=2.48				14.88				
25	10	6	Lm=2,43				14.58				
26	12	8	1.65					13.20			
27	12	2	1.25					2.50			
28	12	16	1.80					28.80			
29	12	2	1.75					3.50			
30	12	16	1.85					29.60			
31	12	2	2.00					4.00			
ml/ø				68.40	62.00	20.25	886.72	498.30	49.20	12.00	
kg/ml				0.222	0.617	0.395	0.617	0.888	1.998	2.466	
kg/ø				15.18	38.25	8.00	547.11	442.49	98.30	29.59	
TOTAL		kg/buc		53		1125					

BETON DE EGALIZARE
BETON ARMAT
OTEL BETON

C8/10,X0,Dmax 32,S3,CEM II B-M (S-LL) 32.5 R
C 25/30,XC4,XF3,CI0.2,Dmax 22,S3,P4,CEM III/A-S 32.5R
OB 37, PC 52

SCARA 1:20

|||



DN	Para marca a	Para
----	--------------	------

DN	Bara marca a		Bara marca b	
mm				
150	26	1.65	27	1.25
315	28	1.80	29	1.75
400	30	1.85	31	2.00

Rev	Nume	Ver	Aprb	Data	Descriere



AQUACARAS


Adresa: P-ta Republicii, nr. 7, Resita
Jud. Caras Severin
Tel.: +40 255 212 458
Fax.: +40 255 214 421
E-mail: office@aquacaras.ro

Proiectant: **Consorțiu S.C Eptisa Romania
S.R.L. și Eptisa Servicios de Ingeniería S.L.**
Șos. Dudașii-Pantelimon nr. 42, RAMS center, et. 5, corp A,
sector 3, București
Tel: + 40 21 301 14 70
Fax: + 40 21 301 14 80
www.eptisa.com

The logo for Eptisa, featuring the word "eptisa" in a stylized, lowercase font. The "e" and "p" are blue, while the "tisa" is orange. The letters are bold and modern.

Project: **MODERNIZAREA INFRASTRUCTURII DE
APA SI APA UZATA IN JUDETUL
CARAS SEVERIN - AGLOMERAREA RESITA**

Retele apa
Camin tip 17-Plan Armare

Plansa nr.	Revizia
CS-RE-PT/DA-A-R-17.2	0